



SPIDER-MAN™

ORIGINAL MOTION PICTURE SCORE

MUSIC COMPOSED BY DANNY ELFMAN



1. MAIN TITLE
2. TRANSFORMATIONS
3. COSTUME MONTAGE
4. REVENGE
5. FIRST WEB
6. SOMETHING'S DIFFERENT
7. CITY MONTAGE
8. ALONE
9. PARADE ATTACK
10. SPECTER OF THE GOBLIN
11. REVELATION
12. GETTING THROUGH
13. FINAL CONFRONTATION
14. FAREWELL
15. END CREDITS

www.columbiarecords.com/spider-man

Motion Picture Artwork & Photography © 2002 Columbia Pictures Industries, Inc. All Rights Reserved.

Motion Picture © 2002 Columbia Pictures Industries, Inc. Spider-Man Character © & © 2002 Marvel Characters, Inc. All Rights Reserved. • © 2002 Sony Music Entertainment Inc. © 2002 Sony Music Entertainment Inc./Manufactured by Columbia Records/550 Madison Avenue, New York, NY 10022-3211/ "Columbia" and ® Reg. U.S. Pat. & Tm. Off. Marca Registrada./WARNING: All Rights Reserved. Unauthorized duplication is a violation of applicable laws.

COLUMBIA PICTURES PRESENTS A MARVEL ENTERPRISES/ LAURA ZISKIN PRODUCTION
 "SPIDER-MAN" STARRING TOBEY MAGUIRE WILLEM DAFOE KIRSTEN DUNST JAMES FRANCO CLIFF ROBERTSON ROSEMARY HARRIS MUSIC BY DANIEL ELFMAN
 EXECUTIVE PRODUCERS PAVI ARAD STAN LEE SCREENPLAY BY DAVID KOEPP BASED ON THE MARVEL COMIC BOOK BY STAN LEE AND STEVE DITKO PRODUCED BY LAURA ZISKIN-IAN BRYCE DIRECTED BY SAM RAIMI
 COLUMBIA PICTURES



SONY MUSIC
SOUNDTRAX

MARVEL

PG-13

sony.com/Spider-Man

COLUMBIA PICTURES





1. MAIN TITLE
2. TRANSFORMATIONS
3. COSTUME MONTAGE
4. REVENGE
5. FIRST WEB
6. SOMETHING'S DIFFERENT
7. CITY MONTAGE
8. ALONE
9. PARADE ATTACK
10. SPECTER OF THE GOBLIN
11. REVELATION
12. GETTING THROUGH
13. FINAL CONFRONTATION
14. FAREWELL
15. END CREDITS

Published by Colpix Music, Inc. (BMI) administered by
Sony/ATV Songs, LLC (BMI)

Album Produced by Ellen Segal and
Danny Elfman

Score Conducted by Pete Anthony
Supervising Orchestrator: Steve Bartek
Orchestrations by Steve Bartek, Mark
McKenzie, Edgardo Simone and David Slonaker
Additional Orchestrations by Marc Mann
Score Recorded and Mixed by Dennis Sands
Music Editor: Ellen Segal
Assistant Music Editor: Ramiro Belgardt
MIDI Supervision and Preparation by
Marc Mann

Tech Support by Noah Snyder

Music Preparation by Julian Bratolyubov
Additional Music Preparations by Ron Vermillion
Orchestra Contracted by The Music Team and
Debbi Datz-Pyle
Score Recorded at Scoring Stage at Sony Pictures
Score Mixed at Eastwood Scoring Stage at
Warner Bros.

Special Thanks: Sam Raimi, Laura Ziskin,
Avi Arad, Ian Bryce, Richard Kraft, Laura Engel,
Lia Vollack, Raul Perez, Doug Mark, Stan Lee,
Kris Iversen, Lisa Herrin

Package Art Direction/Design: David Coleman
www.columbiarecords.com/spider-man

This Compact Disc was manufactured to meet critical quality standards.
If you believe the disc has a manufacturing defect, please call our
Quality Management Department at 1-800-255-7514.
New Jersey residents should call 856-722-8224.

Motion Picture Artwork & Photography © 2002 Columbia Pictures
Industries, Inc. All Rights Reserved.
Motion Picture © 2002 Columbia Pictures Industries, Inc.
Spider-Man Character © & © 2002 Marvel Characters, Inc.
All Rights Reserved.

© 2002 Sony Music Entertainment Inc. / © 2002 Sony Music
Entertainment Inc. / Manufactured by Columbia Records/550 Madison
Avenue, New York, NY 10022-3211 / "Columbia" and ® Reg. U.S. Pat.
& Tm. Off. Marca Registrada. / WARNING: All Rights Reserved.
Unauthorized duplication is a violation of applicable laws.



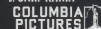
SONY MUSIC
SOUNDTRAX

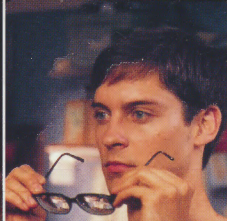
86681

COLUMBIA PICTURES PRESENTS A MARVEL ENTERPRISES / LAURA ZISKIN PRODUCTION
"SPIDER-MAN" STARRING TOBEY MAGUIRE WILLEM DAFOE KIRSTEN DUNST JAMES FRANCO CLIFF ROBERTSON ROSEMARY HARRIS MUSIC BY DANNY ELFMAN
EXECUTIVE PRODUCERS AVI ARAD-STAN LEE SCREENPLAY BY DAVID KOEPP BASED ON THE STAN LEE AND STEVE DITKO CHARACTERS CREATED BY STAN LEE
PRODUCED BY LAURA ZISKIN-IAN BRYCE DIRECTED BY SAM RAIMI



sony.com/Spider-Man





**ORIGINAL
MOTION PICTURE
SCORE**

**MUSIC
COMPOSED BY
DANNY ELFMAN**

K 86681 S1

SPIDER-MAN™

ORIGINAL MOTION PICTURE SCORE

1. MAIN TITLE
2. TRANSFORMATIONS
3. COSTUME MONTAGE
4. REVENGE
5. FIRST WEB
6. SOMETHING'S
DIFFERENT
7. CITY MONTAGE
8. ALONE

9. PARADE ATTACK
10. SPECTER OF THE
GOBLIN
11. REVELATION
12. GETTING THROUGH
13. FINAL
CONFRONTATION
14. FAREWELL
15. END CREDITS

Motion Picture Artwork & Photography © 2002 Columbia Pictures Industries, Inc.
All Rights Reserved. • Motion Picture © 2002 Columbia Pictures Industries, Inc.
Spider-Man Character © & © 2002 Marvel Characters, Inc. All Rights Reserved.
© 2002 Sony Music Entertainment Inc./© 2002 Sony Music Entertainment
Inc./"Columbia" and Reg. U.S. Pat. & Tm. Off. Marca Registrada./CK 86681



SONY MUSIC
SOUNDTRAX

